



GMT MONTHLY MEMBERSHIP PROGRESS REPORT

Results as of: 4/30/2024

Multiple District 321

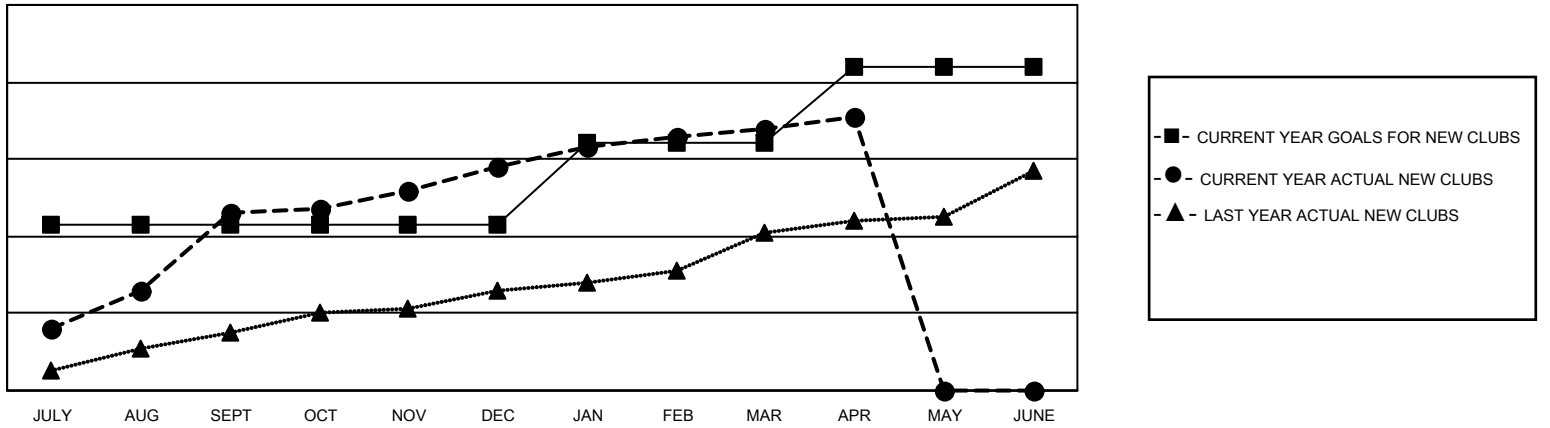
LOCATION: INDIA

GMT: OPEN

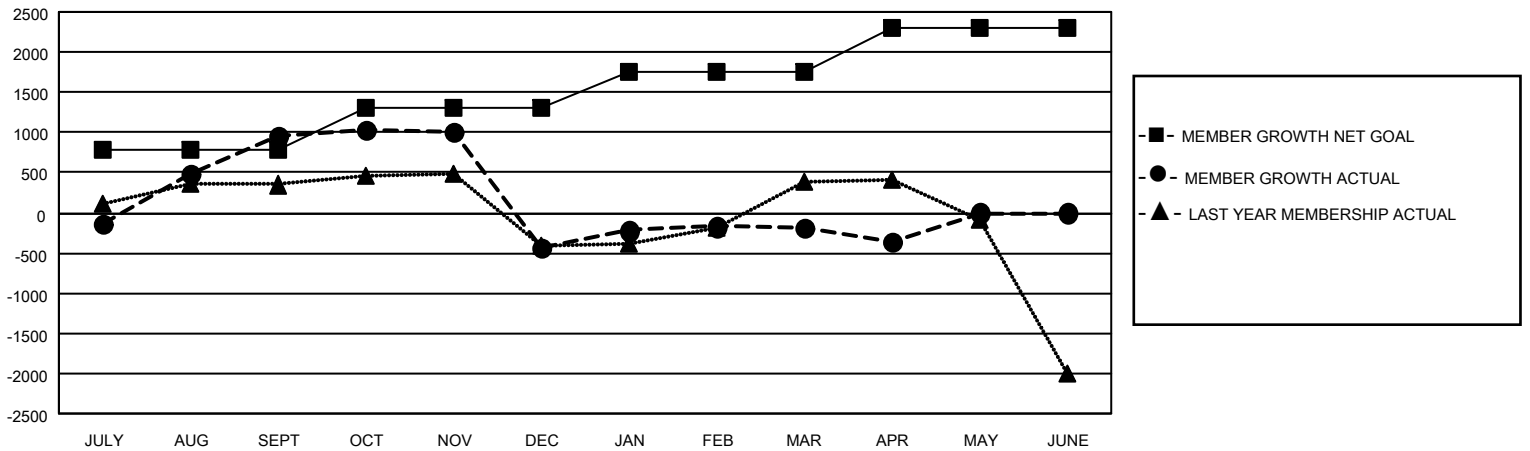
GMT CA 6 - I

Clubs				Members			
RESULTS FOR 2023-2024				RESULTS FOR 2023-2024			
QUARTER	NEW CLUB GOAL	NEW CLUBS	DROPPED CLUBS	QUARTER	MEMBER GROWTH NET GOAL	MEMBER GROWTH ACTUAL	DROPPED MEMBERS ACTUAL (including transfers)
JULY/AUG/SEPT	43	46	9	JULY/AUG/SEPT	790	2,914	1,565
OCT/NOV/DEC	0	12	32	OCT/NOV/DEC	515	1,227	2,484
JAN/FEB/MAR	21	10	12	JAN/FEB/MAR	442	1,083	643
APR/MAY/JUNE	20	3	2	APR/MAY/JUNE	545	321	448

GOALS AND ACTUAL NEW CLUBS CUMULATIVE



GOALS AND ACTUAL MEMBERS CUMULATIVE



DROPPED CLUBS: 55	656 CLUBS OF 1203 ADDED 1 OR MORE NEW MEMBERS	<u>GENDER DISTRIBUTION</u>	
		MALE	22,051 (70.26%)
<u>DROPPED MEMBERS</u>		FEMALE	9,333 (29.74%)
DECEASED	96	TOTAL FAMILY UNIT MEMBERS	
CLUB CANCELLED	768	15,579	
OTHER	4,272	FAMILY MEMBERS PAYING HALF DUES	
TOTAL	5,136	9,238	

[CLICK HERE FOR CUMULATIVE MEMBERSHIP DATA](#)